

# Food & Toy Drive

December 1<sup>st</sup> - December 15<sup>th</sup>

Drop-off at Star Choice Credit Union  
10750 France Ave S., Bloomington, MN 55341



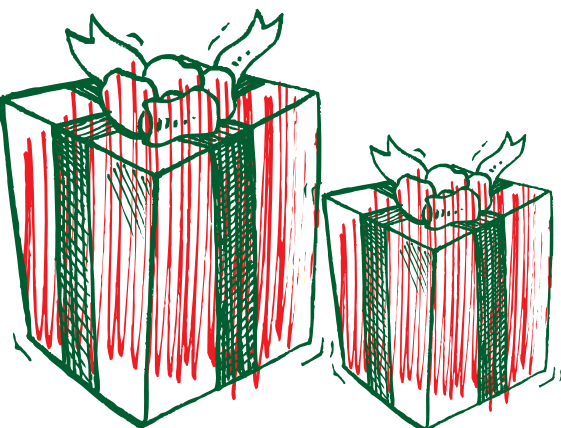
## Food Drive

Whole grain rice (1-2 pound bags),  
Whole grain pasta, Hearty soups  
(high protein, low sodium), Whole  
grain cereal (like Shredded Wheat,  
Kashi, bran cereals, Chex, etc.),  
Canned proteins (meat and beans),  
Canned fruit and vegetables

Toilet paper, Paper towels, Diapers (size 5-7) and  
baby wipes, Coffee, Cooking oil, Baking essentials  
(flour, sugar, spices, baking soda/powder)  
Laundry detergent, Dish soap, Personal care items  
(shampoo, toothpaste, hand soap, shaving cream, toilet-  
ries, etc.) Gluten-free products (whole grains like brown  
rice, wild rice, quinoa, cornmeal; nut flours and butters;  
rice crackers, GF snacks, etc. Check for gluten-free  
product label.), Birthday candles, cake frosting,  
birthday-themed napkins/plates, cake mix, small  
birthday party favors like chalk, bubbles, Dog and  
cat food (particularly wet food, treats, litter, etc.), Paper  
bags and re-usable, cloth totes (We'll always take your  
extra paper grocery bags. We are not accepting plastic  
bag or totes donations).

## Toy Drive

Any new toy, gift, makeup  
bath and body products,  
jewelry, gift cards,  
electronics, techy gadgets  
(such as charging cords,  
wireless earbuds)



**StarChoice**  
Credit Union

